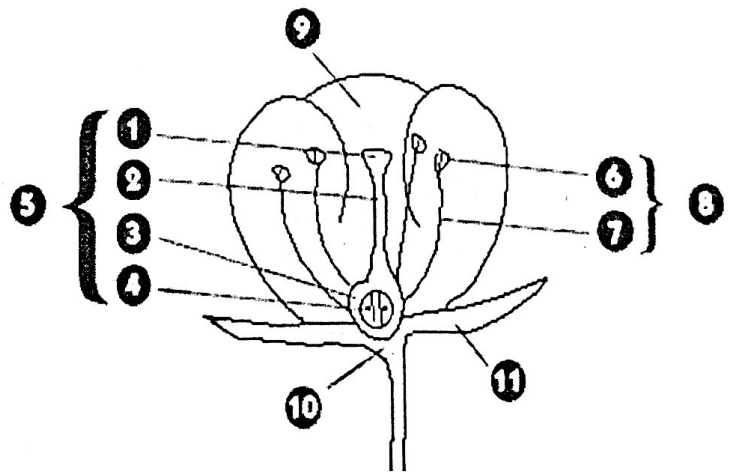


Plant Summary Notes

| Basic Characteristics |                           |
|-----------------------|---------------------------|
| ◦ eukaryotic          | ◦ cell walls of cellulose |
| ◦ multicellular       |                           |
| ◦ autotrophic         |                           |

| Phylum   | Phylum   | Phylum   | Phylum   |
|--|--|--|--|
| Bryophyta<br>"mosses"  | Pterophyta<br>"Ferns"  | Gymnosperms<br>"conifers"  | Angiosperms<br>"flowering plants"  |
| ◦ nonvascular<br>◦ must live low to ground<br>◦ do not reproduce by seeds but by spores<br>◦ must be near water to reproduce | ◦ vascular<br>◦ do not reproduce by seeds but by spores<br>◦ must be near water to reproduce | ◦ vascular<br>◦ reproduce by seeds in cones<br><br>◦ ex: pine trees, Spruce, Juniper | ◦ vascular<br>◦ reproduce by seeds in flowers & fruits<br><br>◦ ex: roses, apple trees, sunflowers |

| Tropisms   |
|--|
| 1. Phototropism - plant bends toward light                         |
| 2. Gravitropism - germinating seeds' roots grow toward gravity     |
| 3. Thigmotropism - plant responds to touch                         |
| 4. Photoperiodism - plant responds to time of day or length of day |



| Female | Flower Parts        | Male                                | Asexual |
|--------|---------------------|-------------------------------------|---------|
|        | 1. Stigma           | 6. Anther - produces pollen (sperm) |         |
|        | 2. Style            | 7. Filament                         |         |
|        | 3. Ovary            | 8. Stamen                           |         |
|        | 4. Ovules (eggs)    | 9. Petal                            |         |
|        | 5. Carpel or Pistil | 10. <del>Stamen</del>               |         |
|        |                     | 11. Sepal                           |         |

pollination occurs here

fertilization occurs here + ovary turns into fruit