

# Field Notes Food Web

In this activity, students will review field notes taken by a biologist who recently visited a fast moving stream. From the biologist's field notes, they will construct a food web diagram of the living things in the stream ecosystem.

# Field Notes

Date: September 8, 2014

Location: Lowell Point, Five Mile Creek, Erie, PA

Notes:

- 67 F
- sunny; with light breeze;
- thunderstorms yesterday, muddy river flow
- heavily shaded area; wooded area surrounding creek banks

# Dobson Fly Larva



- aka "hellgrammites"
- live underwater in fast-moving streams
- lives under rocks to avoid predators (fish mainly)
- ambush aquatic insects (larva of dragonflies, damselflies, stoneflies, etc..)

# Stonefly Nymph



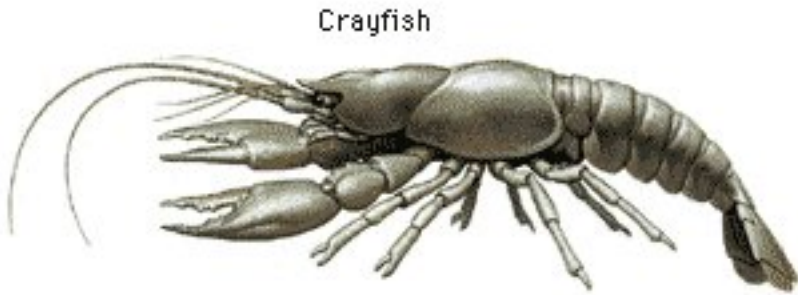
- Herbivores, feed on plant material like algae, leaves, etc.
- Live in streams with high oxygen concentration
- Live along bottom of stream
- Food source for fish and other invertebrate species

# Blue-Green Algae



- Simple, aquatic plant-like organism
- Obtains energy through photosynthesis
- Also called cyanobacteria
- Microscopic
- Can be toxic to humans and pets

# Crayfish



- Closely related to lobster
- Live in freshwater streams
- Up to 3 inches long
- Eaten by trout and other fish
- Prey on two-lined salamanders and aquatic invertebrates like caddis fly larva

# Two Lined Salamander



- Found in Canada and U.S.
- Water oriented, found in and around puddles, streams, swamps, etc.
- Due to small size, preyed on by snakes, other salamanders, birds, crayfish, etc..



# Hydrilla



- Invasive plant
- Can grow a couple meters long
- Obtains energy through photosynthesis
- Provides shelter for fish, frogs, turtles, insects, etc..



# Brook Trout



- Sensitive to pollution and low oxygen levels
- Warm summer temperatures are stressful to brook trout
- Preys on larval and adult forms of aquatic insects
- Preys on amphibians, mollusks, and even small aquatic mammals

# King Fisher



- Eat any kind of fish up to 5 inches in length
- Occasionally eat small mammals, reptiles, amphibians, etc..
- Nests in a burrow dug into a steep bank above a body of water